

FEATURES

- ❑ Compact size
- ❑ Microcontroller based logic
- ❑ 8 potential free contact inputs
- ❑ Super bright Red LED
- ❑ Low power, Long life illumination
- ❑ Intelligent fault processing



The ALM-108 Alarm Annunciator provides an ideal solution to alarm monitoring problems which allows an operator to monitor the alarm status of critical parameters. Use of microcontroller has greatly reduced the number of components, thereby enhancing reliability and efficiency. This model due to its small size finds application at many places where large panel space is not available. The incoming fault signals from the various potential free field contacts are scanned and processed, driving the corresponding LED window and hooter contact in order to announce the fault, according to the operating sequence. The super bright LEDs ensure a long and absolutely maintenance free window life along with good visibility and low power consumption.

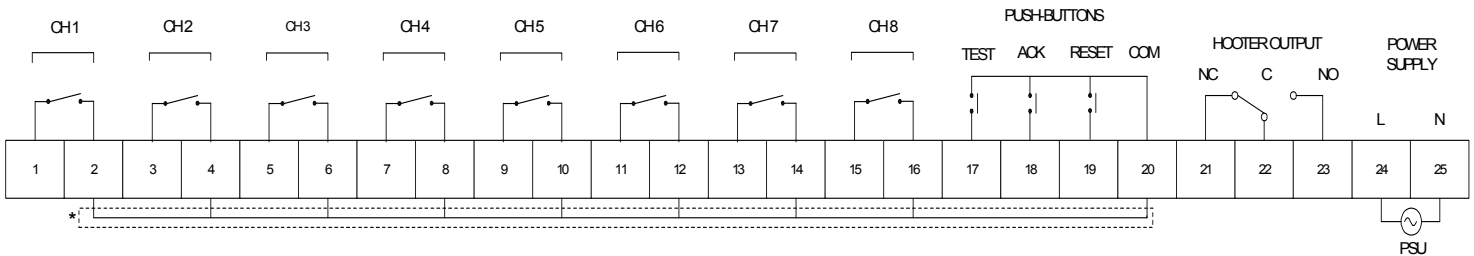
SPECIFICATIONS:

Power supply	Universal SMPS suitable for 95 to 265 V AC and 110 to 300 V DC or 24V DC
Number of points	8
Inputs	Potential free contacts N/O or N/C – Programmable by internal DIP switches
Output	1 N/O for audible hooter
Output Rating	3 amps at 230 V AC (resistive)
Window facia size	32 × 37 mm
Window legend	Backlit photo film (user specified)
Interrogation voltage	24 V DC
Status indication	Flashing watch dog LED indication
Push buttons	Terminals for TEST, ACKNOWLEDGE and RESET push buttons (Switch not provided)
Environmental	Temperature : 0 to 55 Deg. C Humidity : Up to 95% RH (non condensing)
Window	8
Matrix	4 × 2
Column	4
Row	2
External Dimensions	192(W) × 96(H) × 215(D) in mm
Cut-out	186(W) × 92(H) in mm
Gross Weight	985 gms

ANNUNCIATOR OPERATIONAL SEQUENCE:

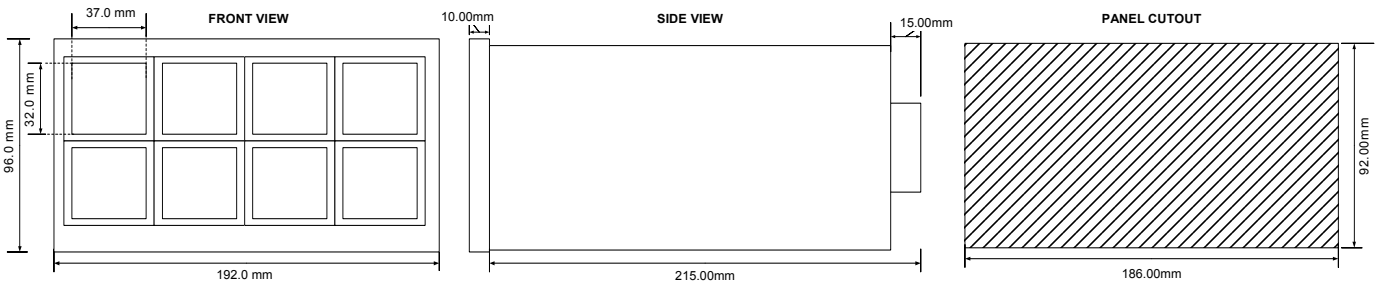
Field contact	Control pushbutton	Alarm lights	Hooter
Normal	-	Off	Silent
Abnormal	-	Flashing	On
Abnormal	ACKNOWLEDGE	Steady On	Silent
Normal	ACKNOWLEDGE	Steady On	Silent
Normal	RESET	Off	Silent
Normal	TEST	Flashing	On

ELECTRICAL CONNECTIONS:



* Terminals 2, 4, 6, 8, 10, 12, 14, 16 and 20 internally shorted.

DIMENSIONS IN mm:



ORDERING CODE:

ALM108	-		-		-	
Function		Back-lit Color		Power Supply		
FS = Standard version		BR = Red BW = White		PU = Universal SMPS PL = 24VDC		

Ordering Code for Legend :

WL - **TXT** : 8 numbers

SAMPLE CODE ORDER:
ALM108 – FS – BR – PL
 Standard version, with Red back-lit color,
 Universal SMPS power supply

NOTE: If legends are ordered for windows then provide text while placing order.